


PRC – European Palliative Care Research Centre

## PRAIS

The Palliative Radiotherapy And Inflammation Study

Pål Klepstad  
Dept. Intensive Care Medicine  
St Olavs University Hospital  
Trondheim, Norway



## PRAIS - Two perspectives

Predict response from radiotherapy given for bone cancer pain

Inflammation

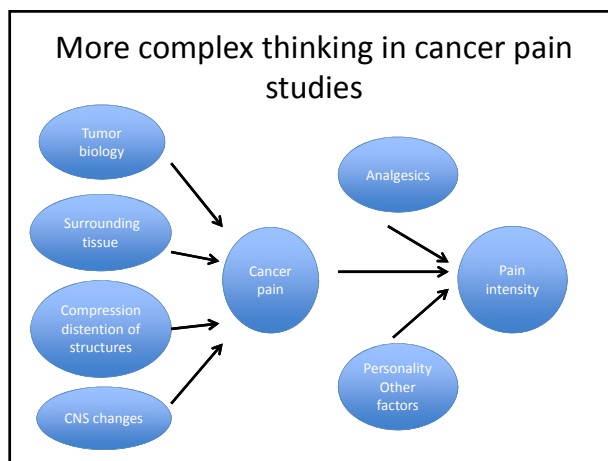
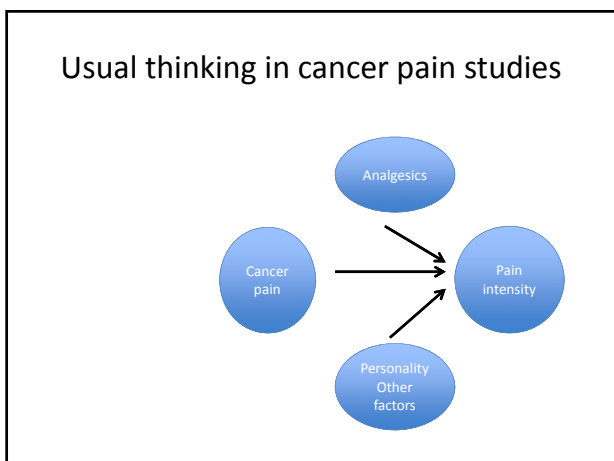
## Current cancer pain research

Typically cancer pain studies inclusion criteria are:

- Age > 18 years
- Evidence of malignant disease
- Pain intensity NRS > 3 (moderate or severe pain)
- Able to comply with study procedures

What we actually do say is that for cancer in relation to pain - one size fits all.

Are these cancers equal?

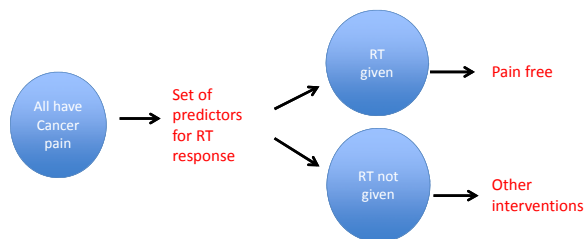






### Optimal aim

Predict response from RT for bone cancer pain

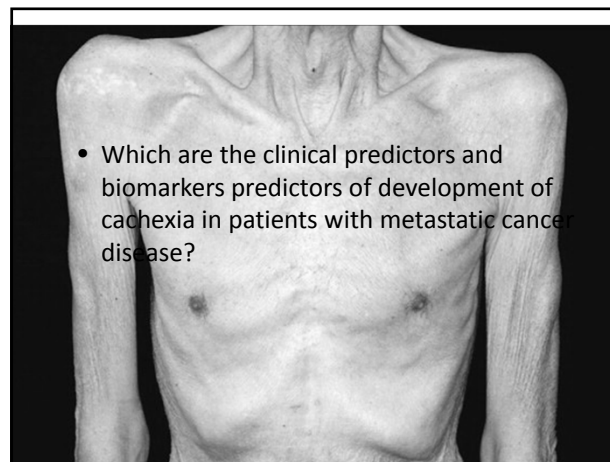
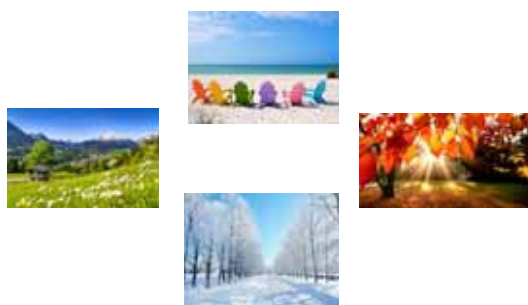


### Research question

Which inflammatory substances are associated with cancer pain? A clinical experimental set up.



### One year follow-up



- Which are the clinical predictors and biomarkers predictors of development of cachexia in patients with metastatic cancer disease?

### Research question

- Which are the clinical predictors and biomarkers predictors of development of depression in patients with metastatic cancer disease?



### Research question

- Which are the clinical predictors and biomarkers predictors of development of pain in patients with metastatic cancer disease?



### Sum it up

As for other pains basic research is needed  
As for other pains clinical research is needed

Future goal is targeted treatment on the origin of  
cancer pain